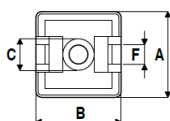


Halteplatte 227144



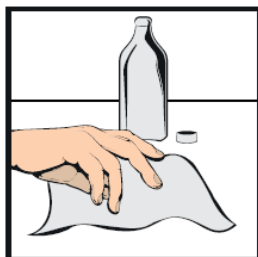
Cable tie width	Dimensions (mm)					Tensile strength		Pack
(mm)	A	B	C	F	H	(kg)	(N)	pcs.
3,6	19	19	4,2	4	5	18,34	180	100

ADHESIVE DATA SHEET

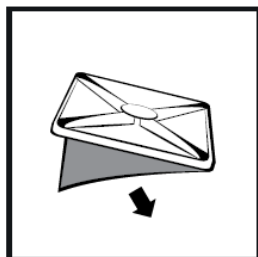
Type of support	U.m.	Rubber base Polyethylene
Density	kg/m ³	100
500 hour static shear adhesion*	kg/cm ²	0,7
Maximum recommended weight loading*	kg/cm ²	0,036
Tear resistance	kg/cm ²	10
Elongation		>150%
UV resistance		not recommended
Working temperature	°C	-40°C / 60°C
Recommended application temperature	°C	15°C / 40°C
Use		immediate application

*On clean zinc metallic surfaces.

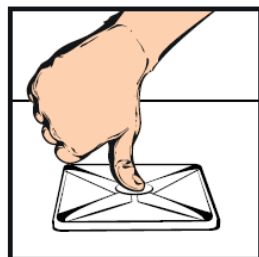
INSTALLATION INSTRUCTION FOR SELF ADHESIVE MOUNTING BASES



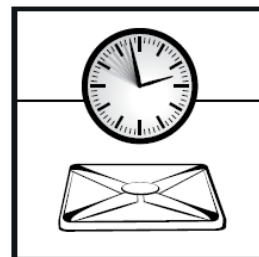
Clean the surface using an appropriate cleaner and wait until the surface is completely dried.



Peel off the protective film avoiding to touch the adhesive.



Put the base on the cleaned surface, pressing down with the finger for several seconds.



To assure the max adhesiveness to the surface, wait for the time indicated in the table technique.