

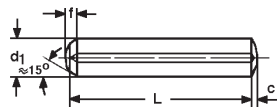
**Zylinderkerbstifte**

KS 3

**Goupilles cannelées  
cylindriques**

KS 3

~ISO 8740

aus Stahl 9 S Mn 28 K  
**blank, geölt**en acier 9 S Mn 28 K  
**clair, huilé**

d 1	3	4	5	6	8
c~	0,4	0,5	0,6	0,8	1
f~	1,3	2	2	2,5	2,8
Tol.	H 9	H 11	H 11	H 11	H 11
L	100	100	100	100	100
6	9.80				
8	9.80	10.90	13.40		
10	9.80	10.90	13.40	18.50	
12	10.10	10.90	13.40	18.50	
16	10.10	11.40	13.50	18.70	
20	10.10	11.70	14.30	19.20	28.30
25	10.70	12.40	14.90	19.90	29.60
30	11.50	12.40	16.—	21.20	32.80
35		19.20	18.80	23.90	33.40
40		20.40	19.70	25.20	35.90
45				25.80	42.80
50				27.70	48.40
55					50.40
60				32.10	51.70
	100	100	100	100	100

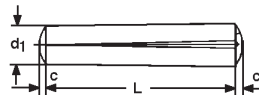
**Kegelkerbstifte**

KS 1

**Goupilles cannelées  
coniques**

KS 1

~ISO 8744

aus Stahl 9 S Mn 28 K  
**blank, geölt**en acier 9 S Mn 28 K  
**clair, huilé**

d 1	4	5	6	8	10
c~	0,5	0,63	0,8	1	1,2
Tol.	H 11	H 11	H 11	H 11	H 11
L	100	100	100	100	100
8	11.10				
10	11.10	13.70			
12	11.10	13.70			
16	11.60	13.70	18.50		
20	11.60	14.50	19.20	25.70	
24	12.60	15.30	19.20	26.30	
30	12.60	15.30	20.70	30.80	
36			22.80	30.80	
40		16.80	23.50	33.—	100.50
55				45.40	
	100	100	100	100	100