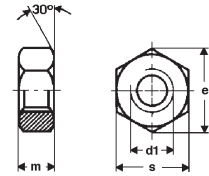
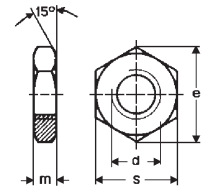


Sechskantmuttern 0,8 daus Messing
vernickelt**Ecrous six pans 0,8 d**en laiton
nickelé

d 1	e min.	s	m max.	100	500	1000	10000
M 2	4,32	4	1,6	6.50	5.90	4.70	4.10
M 2,5	5,45	5	2	6.60	6.—	4.70	4.40
M 3	6,01	5,5	2,4	6.20	5.60	4.60	4.—
M 4	7,66	7	3,2	8.30	8.20	5.90	5.20
M 5	8,79	8	4	11.30	10.20	8.10	7.20
M 6	11,05	10	5	18.20	16.40	13.40	12.30
M 8	14,38	13	6,5	38.50	34.50	28.90	26.40
M 10	18,9	17	8	81.10	73.10	60.20	54.90
M 12	21,1	19	10	111.80	100.70	84.10	
M 16	26,75	24	13	222.20	200.—	171.40	
M 20	32,95	30	16	390.60	351.50	300.80	
				100			
				25			

Sechskantmuttern 0,5 daus Messing
blank**Ecrous six pans 0,5 d**en laiton
clair

d	e min.	s	m max.	100	500	1000
M 3	6,01	5,5	1,8	6.60	4.90	4.20
M 4	7,66	7	2,2	9.40	6.50	5.70
M 5	8,79	8	2,7	11.40	8.40	7.30
M 6	11,05	10	3,2	15.50	11.70	10.20
M 8	14,38	13	4	35.90	26.60	23.—
M 10	18,9	17	5	60.90	51.70	42.70
M 12	21,1	19	6	88.90	75.30	62.10
M 16	26,75	24	8	151.80	129.60	106.60
M 20	32,95	30	10	244.30	196.90	174.50
				100		
				50		